

FACULTY MEDIA CREATION HUB

Create. Share. Learn. Succeed.

Russell Betts Ph.D. & David C. Perdian Ph.D.
Department of Physical Sciences
North Campus
STEM Pathway

WHAT IS THE HUB?

The Faculty Media Creation Hub (**The Hub**) will be created and housed in the North Campus Academic Success Center (ASC) and will contain the necessary software, hardware, and most importantly training, that will enable faculty members from any pathway to create and share media with their students to enhance the learning process.

Additionally, tutorials will instruct faculty on how to embed their digital media into their D2L course shells and how to share their media via social media platforms.

WHAT EQUIPMENT IS AVAILABLE?

HD Camera with tripod, studio lights, green-screen, white-screen, wireless microphones, and necessary accessories



Lenovo Miix 2-in-1 laptop with Camtasia and iPad Pro for screen recording, editing video, and recording audio



Image Credits: amazon.com & bhphotovideo.com

WHY SHOULD FACULTY CREATE MEDIA?

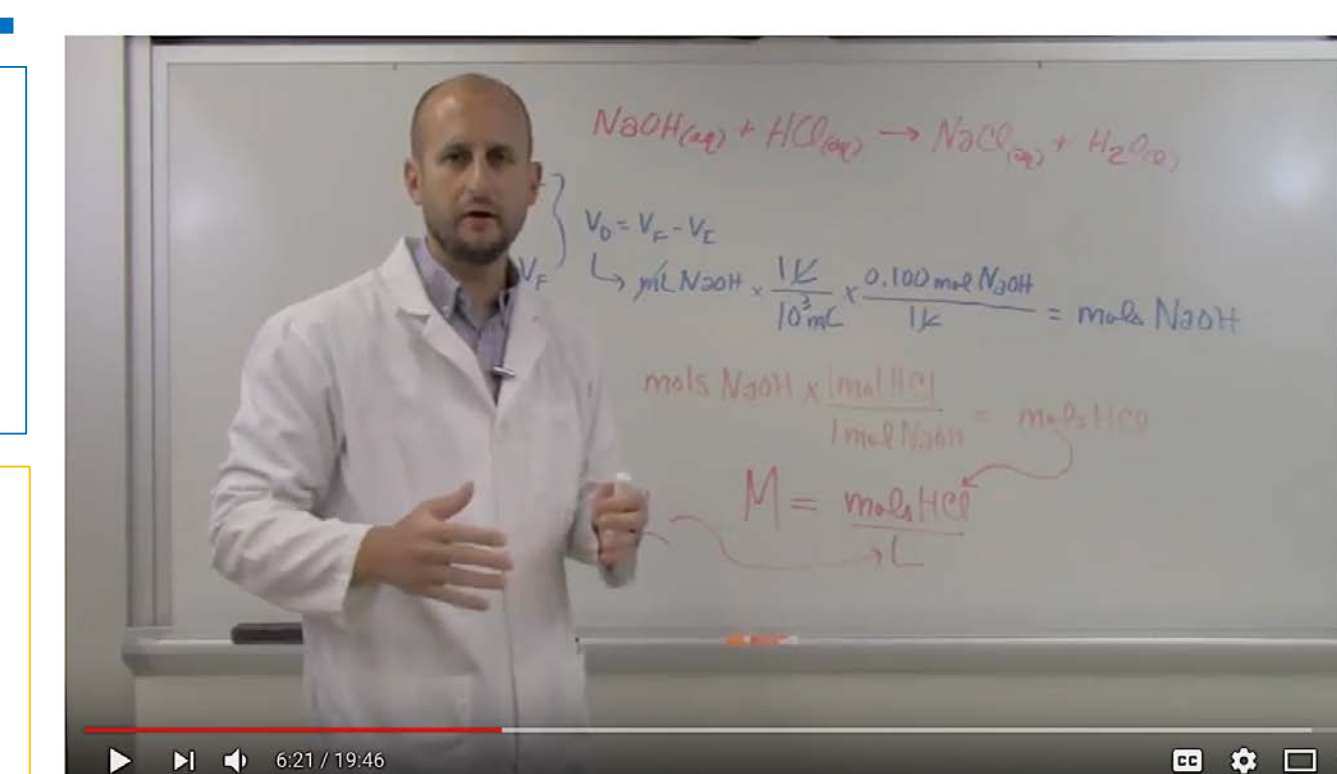
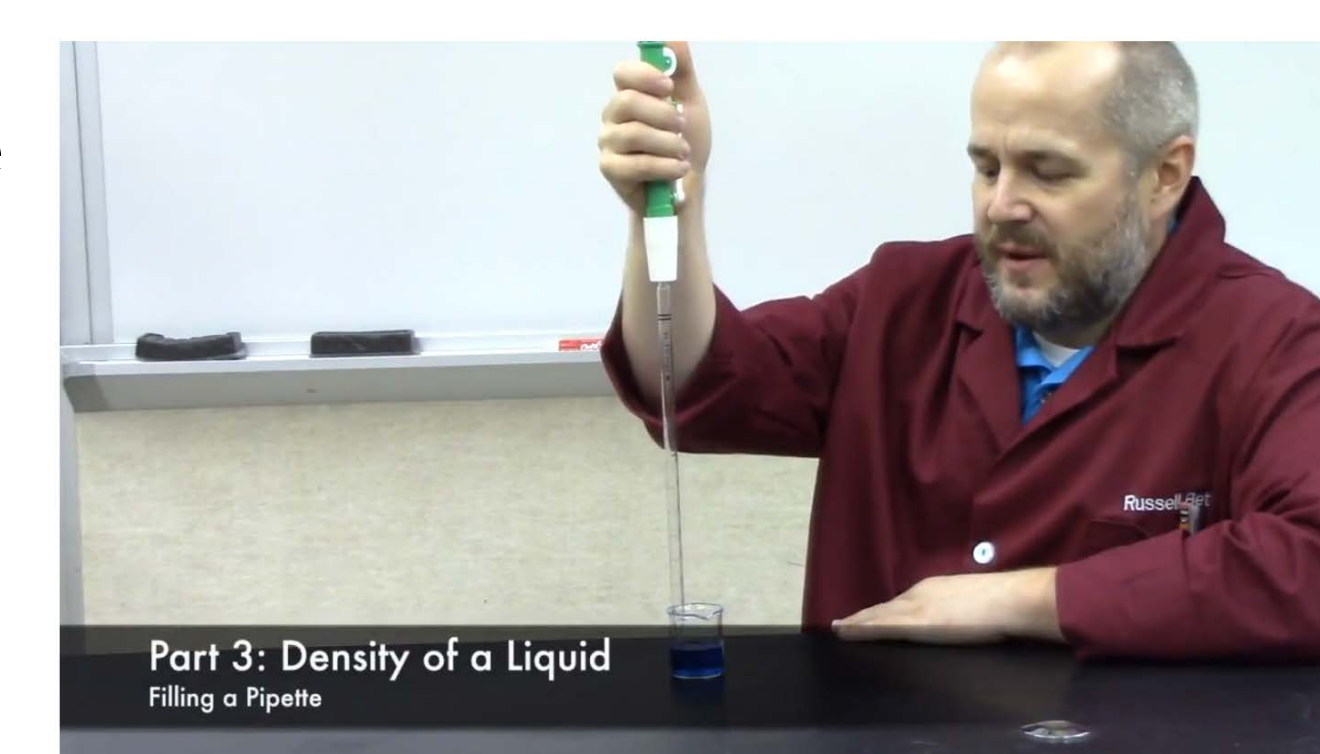
- Educational videos, commonly posted on YouTube, have made a significant and positive impact on student learning over the last decade (Kaltura 2015).
- Popular educational YouTube channels such as Khan Academy and Crash Course each have millions of subscribers and their videos regularly receive millions of views.
- Half of all adults surveyed reported that they watch YouTube for educational videos (Purcell 2013).
- Students have told us that they appreciate when we, their professors, make our own videos for our courses. They know that when we make the videos, the concepts and questions we go over in the video mirror the concepts we introduce in class.

Kaltura (2015). *The State of Video in Education 2015*. New York. Retrieved from <https://goo.gl/N5HCpG>
Purcell, K. (2013). *Online Video 2013*. Pew Research Center. Retrieved from <https://goo.gl/JH7Ur5>

WHAT TYPE OF MEDIA CAN FACULTY CREATE?

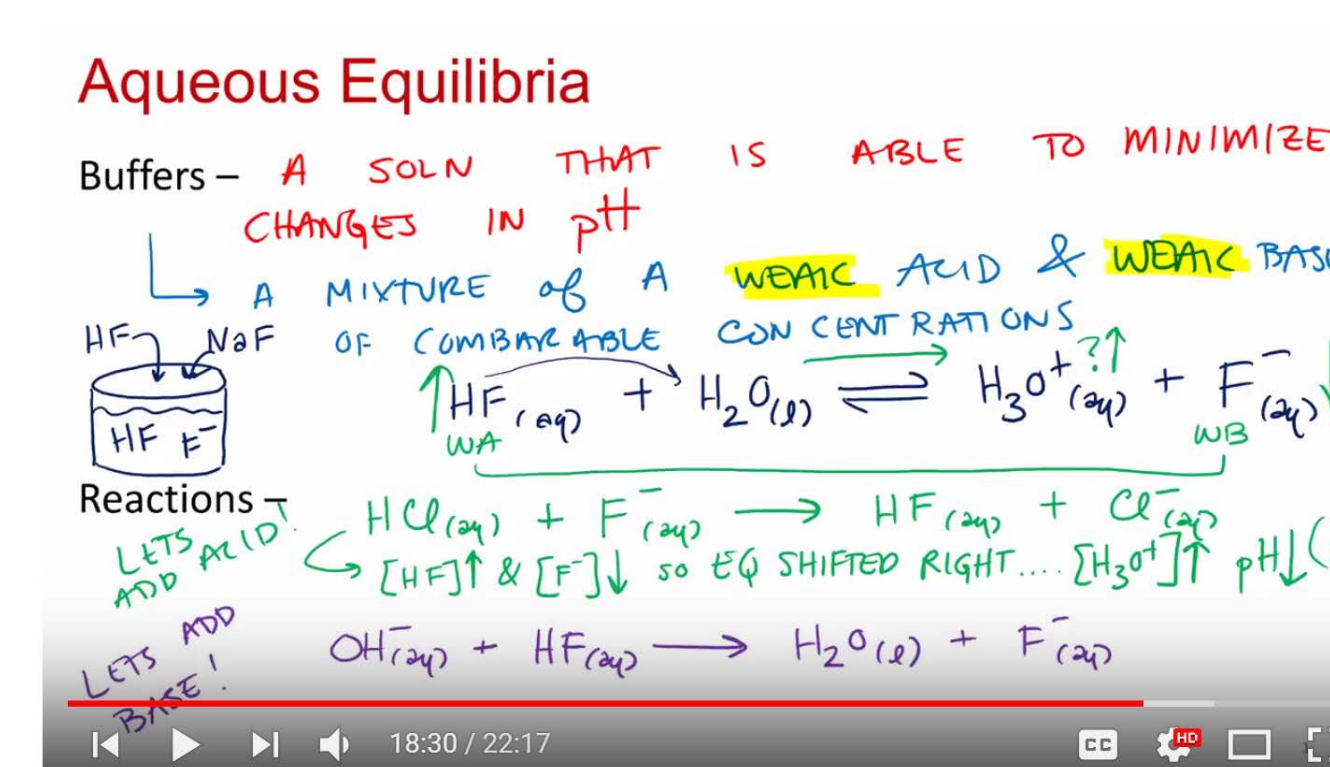
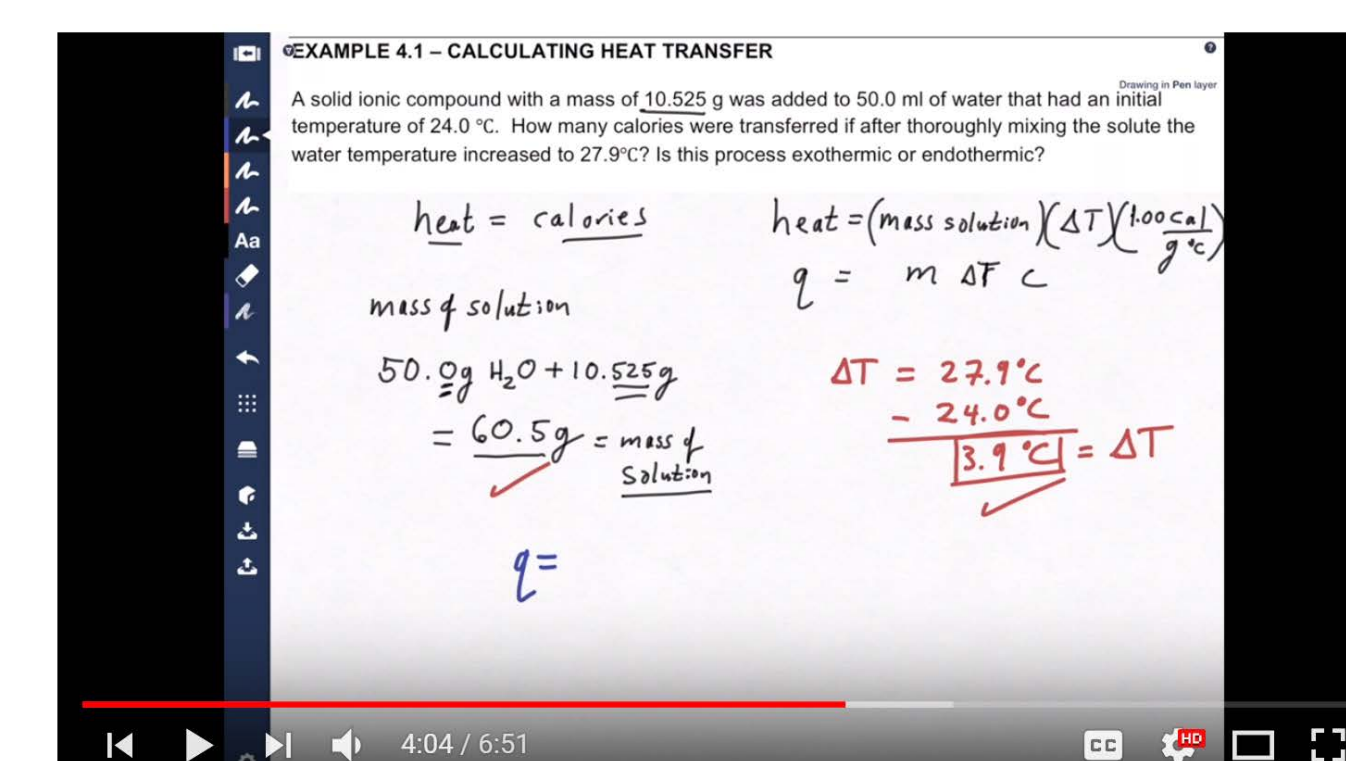
Faculty can create videos outside of the classroom to supplement in class learning or for blended, online, or flipped classrooms

<https://youtu.be/rFwnDKHKsxxg>



<https://youtu.be/ihVLSVNrkdA>

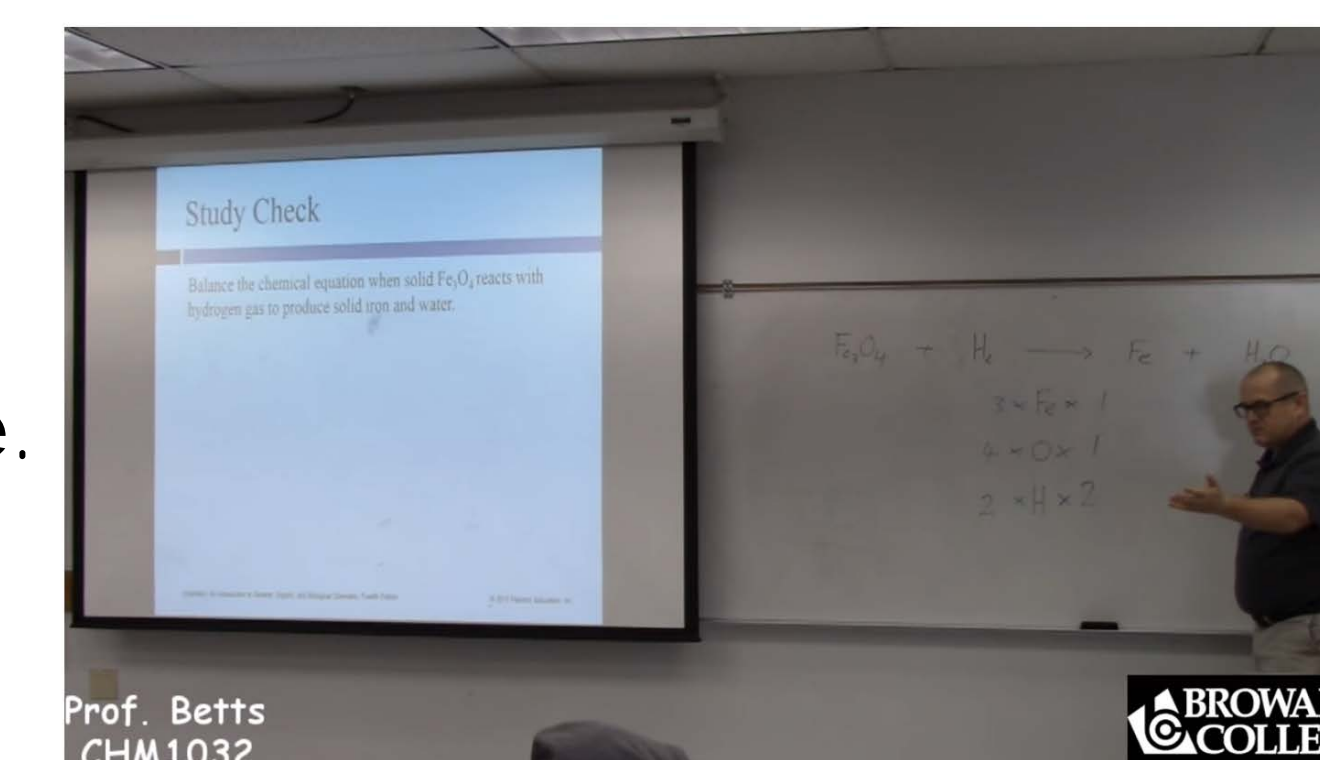
https://youtu.be/Nvx_rjqir-4



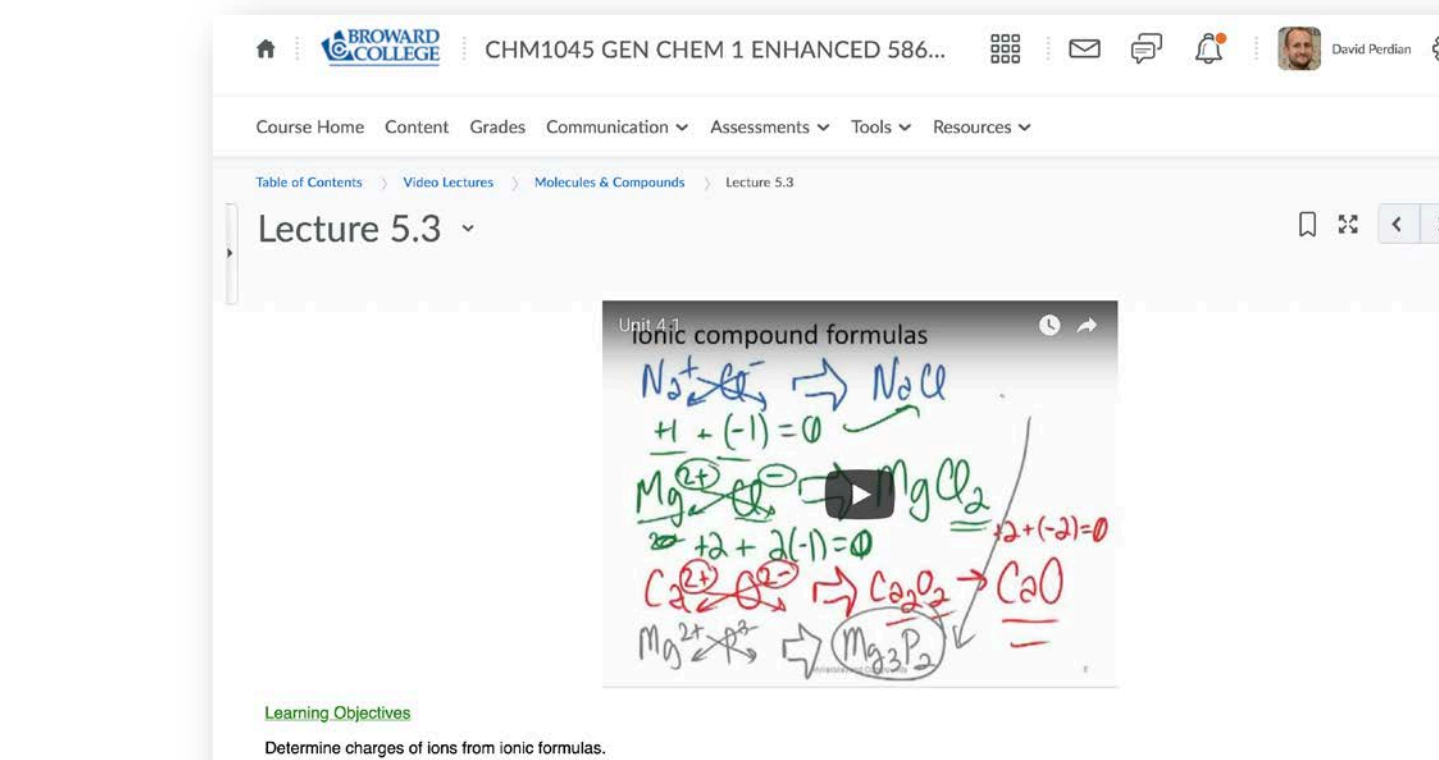
<https://youtu.be/zvzcxEOd0w4>

Faculty can create videos using screen capture software on either an iPad or a Windows PC tablet laptop.

Faculty can record live lectures so that students can review the material anytime.



<https://youtu.be/z71OmX3MEww>

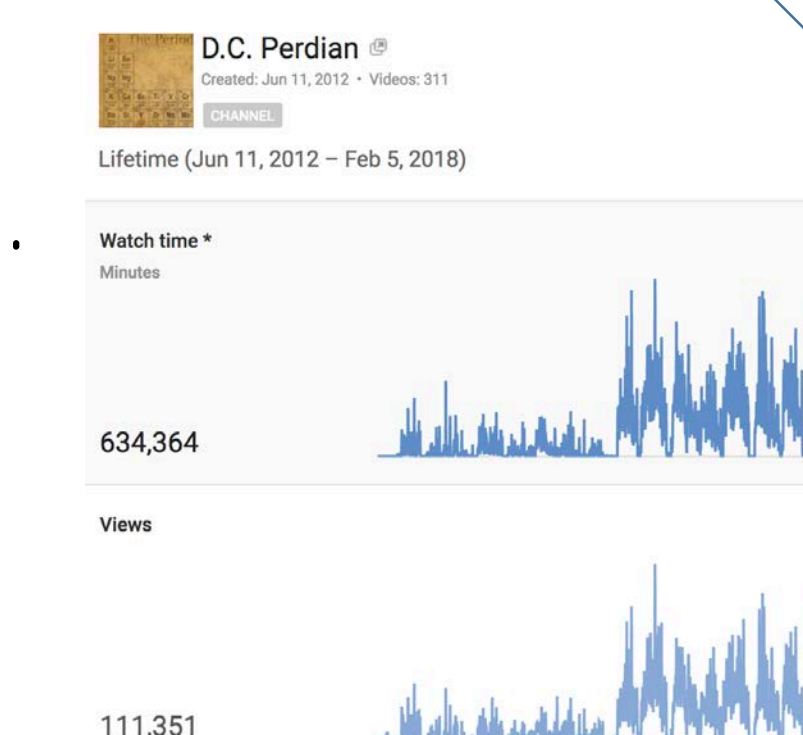


Media can be embedded into D2L.

Faculty will learn how to post their videos or podcasts on YouTube, iTunes, & Google Play. Tutorials on YouTube analytics will be available.



Image Credits: youtube.com, apple.com, & play.google.com/music



WHERE & WHEN?

The Hub will be housed at the North Campus ASC and will begin creating media in Fall 2018. For more information, contact us at rbetts@broward.edu or dperdian@broward.edu